



International Artificial Intelligence Olympiad

International Artificial Intelligence Olympiad - iAIO


SILVERZONE®

Organised by:





SilverZone Foundation

New Delhi, India

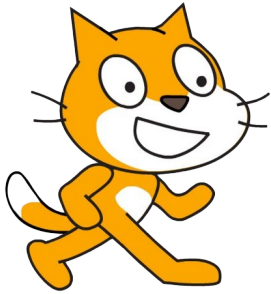
www.silverzone.org

Class 3 : Sample Questions

The actual question paper contains 30 questions. The duration of the test paper is 40 minutes.

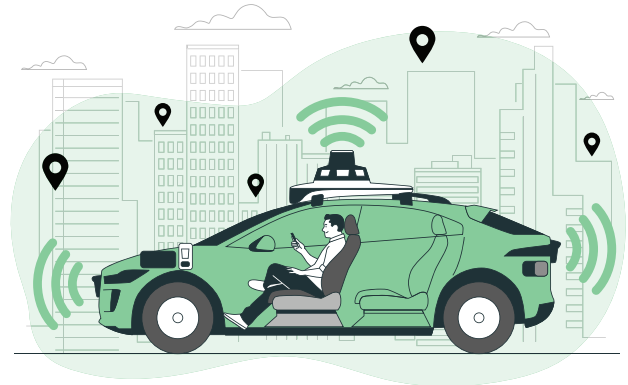
1. Which of the following correctly shows the order in which computers evolved?
 - (A) Abacus → ENIAC → UNIVAC → IBM PC
 - (B) ENIAC → UNIVAC → Abacus → Modern Computers
 - (C) IBM PC → UNIVAC → ENIAC → Abacus
 - (D) UNIVAC → Abacus → IBM PC → ENIAC
2. Which of these machines is MOST likely to use AI to make decisions on its own?
 - (A) 
 - (B) 
 - (C) 
 - (D) 
3. If a robot vacuum cleaner avoids toys on the floor and changes its path, what type of intelligence is it using?
 - (A) Natural intelligence
 - (B) Magnetic force
 - (C) Artificial intelligence
 - (D) Remote control logic
4. What makes a machine “smart” like a smart refrigerator or smart watch?
 - (A) It runs only on battery
 - (B) It connects to the internet and learns from data
 - (C) It has colourful lights
 - (D) It has a built-in torch
5. Which of these is an example of an AI assistant understanding a command?
 - (A) You press a button and the light turns on
 - (B) You clap and the toy dances
 - (C) You say, “What’s the weather?” and Alexa answers
 - (D) You spin a top and it moves in circles
6. In Scratch, what would happen if you use the “repeat” block?
 - (A) The sprite disappears
 - (B) The sprite performs an action again and again
 - (C) The project crashes
 - (D) The background changes automatically
7. Which statement best explains the difference between natural and artificial intelligence?
 - (A) Humans and robots both have natural intelligence
 - (B) Only computers can have intelligence
 - (C) Natural intelligence is found in people; artificial intelligence is created in machines
 - (D) Natural intelligence is slower than artificial intelligence
8. If your friend designs a robot that helps pick up toys using Scratch, which value is MOST important to follow?
 - (A) Make sure it’s shiny and colourful
 - (B) Keep it a secret from everyone
 - (C) Test it quietly at night
 - (D) Be fair and share your creation responsibly

9. Which tool is MOST suitable for creating a fun animation with characters that move and talk?



- (A) Scratch
- (B) Calculator
- (C) Word processor
- (D) Spreadsheet

10. In a classroom discussion, a student says, "I saw a car that drives itself!" Which topic is the BEST match for this statement?



- (A) History of electricity
- (B) Natural disasters
- (C) Artificial intelligence in daily life
- (D) Painting and drawing



SAMPLE QUESTION'S ANSWERS

- | | | | | | | | | | |
|--------|--------|--------|--------|--------|--------|--------|--------|--------|---------|
| 1. (A) | 2. (B) | 3. (C) | 4. (B) | 5. (C) | 6. (B) | 7. (C) | 8. (D) | 9. (A) | 10. (C) |
|--------|--------|--------|--------|--------|--------|--------|--------|--------|---------|